

Upgrading of Grinding Plant in IJmuiden

ENCI, The Netherlands, will upgrade their grinding plant in IJmuiden.

KHD Humboldt Wedag will supply the process and the equipment in two areas of the plant: The slag grinding unit, consisting of a Roller Press type RP16, with 2600 kW drive power and a VSK-separator.

This separator combines the static V-SEPARATOR with the performance of a SEPMASTER and replaces the existing rotary dryers.

Furthermore, a separator of the second generation



of their largest mill is replaced by a SEPMASTER type SKS 3750, which is good for 280 t/h slag cement.

The first part of delivery and start-up is scheduled in the first quarter of 2002, the second one in 2003.



The outlet end of our rotary kiln is protected by heat-resistant outlet segments. The air cooling of the particularly large surface ensures a long life of the segments. So, you don't need to change the outlet each year. We give you a two year's guarantee.

- high-grade cast steel quality
- maximum abrasion resistance
- uniform material thickness
- maximum possible cooling surface
- covered by refractories
- multi-purpose application
- easy mounting
- split design
- cost effective
- patented

ROMIX® warrants raw-meal quality at ÜNYE CIMENTO SANAYII

The Turkish cement producer ÜNYE CIMENTO SANAYII VE TICARET A.S. placed an order with KHD Humboldt Wedag for the supply of a ROMIX® system for ensuring the raw-meal quality at their plant.

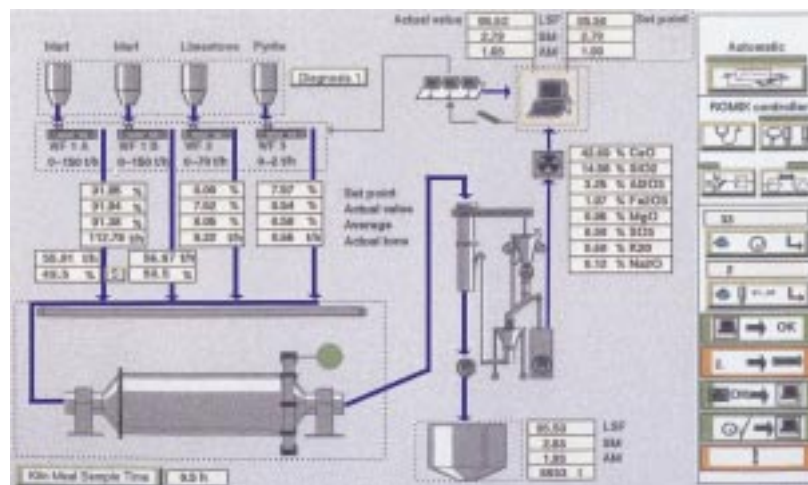
KHD Humboldt Wedag will deliver and install the complete system.

The ROMIX® system includes automatic samplers for raw meal and kiln meal, a pneumatic tube plant for sample transport, laboratory equipment with X-ray fluorescence analyzer and a computer system with adaptive mixture control for automatic setting of

weighfeeders. ROMIX® warrants a uniform raw-meal quality and relieves the burden on the operators; it improves the

informative content and reproducibility of the analyses and lowers the production cost. A part from considering

the different quality set-points the control also attempts to adjust the mixture of the raw-material components in such a way that preferably cost-efficient materials are used while the percentage of expensive components is minimized.



KHD Humboldt Wedag AG

D-51057 Cologne, Phone: +49(0)221-8226088 • Fax: +49(0)221-8226647 • E-mail: marketing_cement@hw.composition.de • <http://www.humboldt-wedag.de>

Humboldt Wedag, Inc.

400 Technology Parkway, Norcross, Georgia 30092, Phone: +1770-810-7300 • Fax: +1770-810-7333 or 7343 • E-mail: hwi@humboldt-wedag.com • <http://www.humboldt-wedag.com>